

# Melissa Business Park



Contact: 940-703-8897

[info@txbusinessparks.com](mailto:info@txbusinessparks.com) / [www.txbusinessparks.com](http://www.txbusinessparks.com)

# 96,000 SF of Industrial Flex Space (Phase 1)

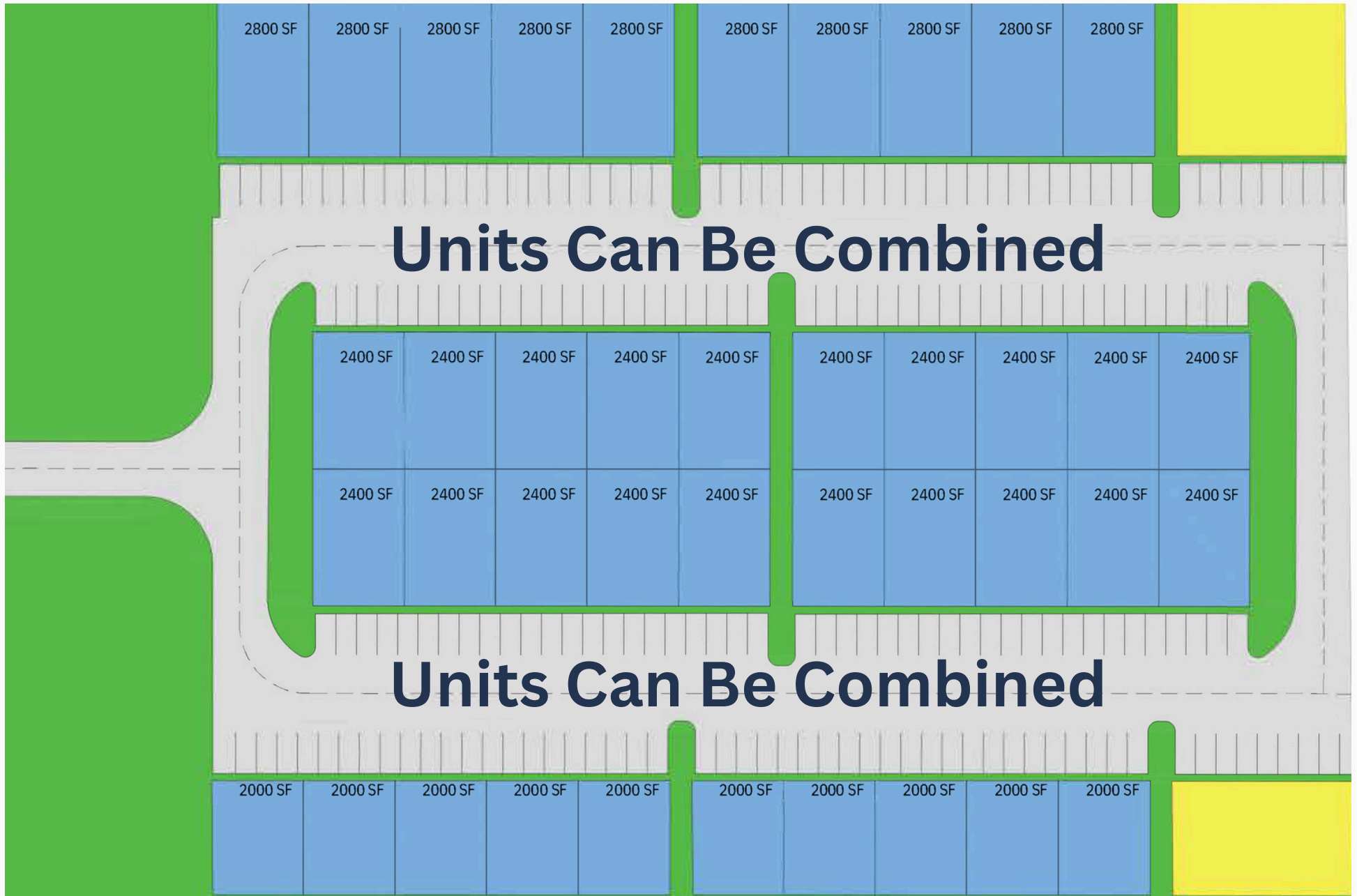
## Unit Sizes: 2,000 - 24,000 SF

- Full HVAC throughout office and warehouse
- 12' x 14' overhead door
- Glass storefront entrance
- Three phase electrical capable
- Designated signage space above door
- Multiple designated parking spaces per unit
- Fully insulated
- Mezzanine Option (Pre-Leased Units)
- Water provided by North Collin SUD & on-site septic system
- Tall Ceilings (20' side walls & 25' peak height)
- Additional overflow parking
- No Zoning - Property located in Collin County Zoning

Contact: 940-703-8897

[info@txbusinessparks.com](mailto:info@txbusinessparks.com) / [www.txbusinessparks.com](http://www.txbusinessparks.com)

# Site Plan



Contact: 940-703-8897

[info@txbusinessparks.com](mailto:info@txbusinessparks.com) / [www.txbusinessparks.com](http://www.txbusinessparks.com)

# Shell Unit



**Contact: 940-703-8897**

**[info@txbusinessparks.com](mailto:info@txbusinessparks.com) / [www.txbusinessparks.com](http://www.txbusinessparks.com)**

# Potential Customizations

## Interior Finish-outs

**We have the ability to customize interior finish-outs with our in house construction crew (TX Park Management)**

- **Mezzanine options**
- **Multiple & larger offices**
- **Multiple & larger bathrooms with showers**
- **Kitchenette & Cabinets**
- **Specialty flooring - tile, hardwood floors, etc**
- **Additional windows (exterior & interior)**
- **Business specific improvements**

**Contact: 940-703-8897**

**[info@txbusinessparks.com](mailto:info@txbusinessparks.com) / [www.txbusinessparks.com](http://www.txbusinessparks.com)**

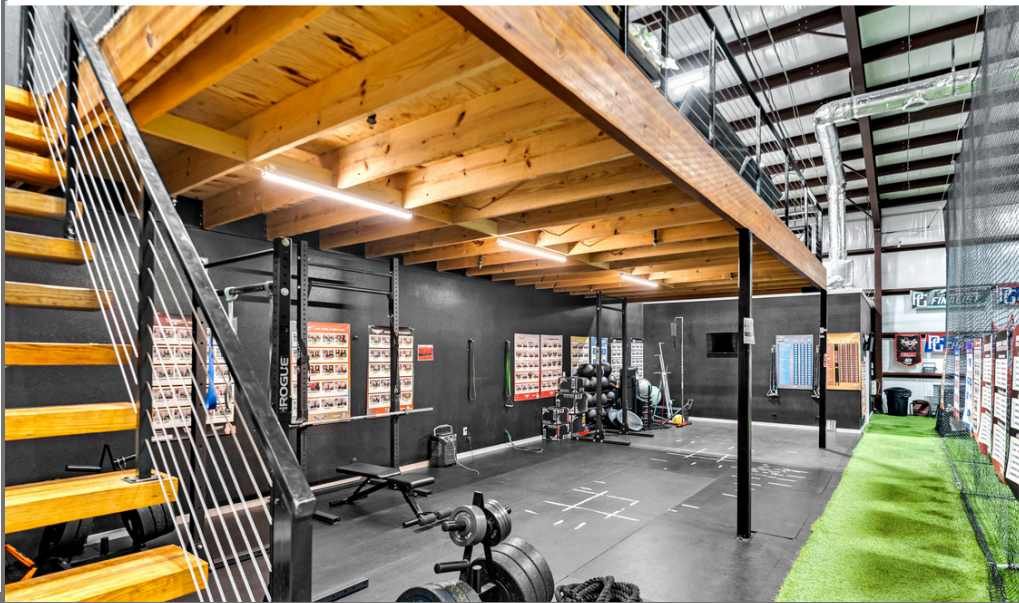
# Interior Customizations



Contact: 940-703-8897

[info@txbusinessparks.com](mailto:info@txbusinessparks.com) / [www.txbusinessparks.com](http://www.txbusinessparks.com)

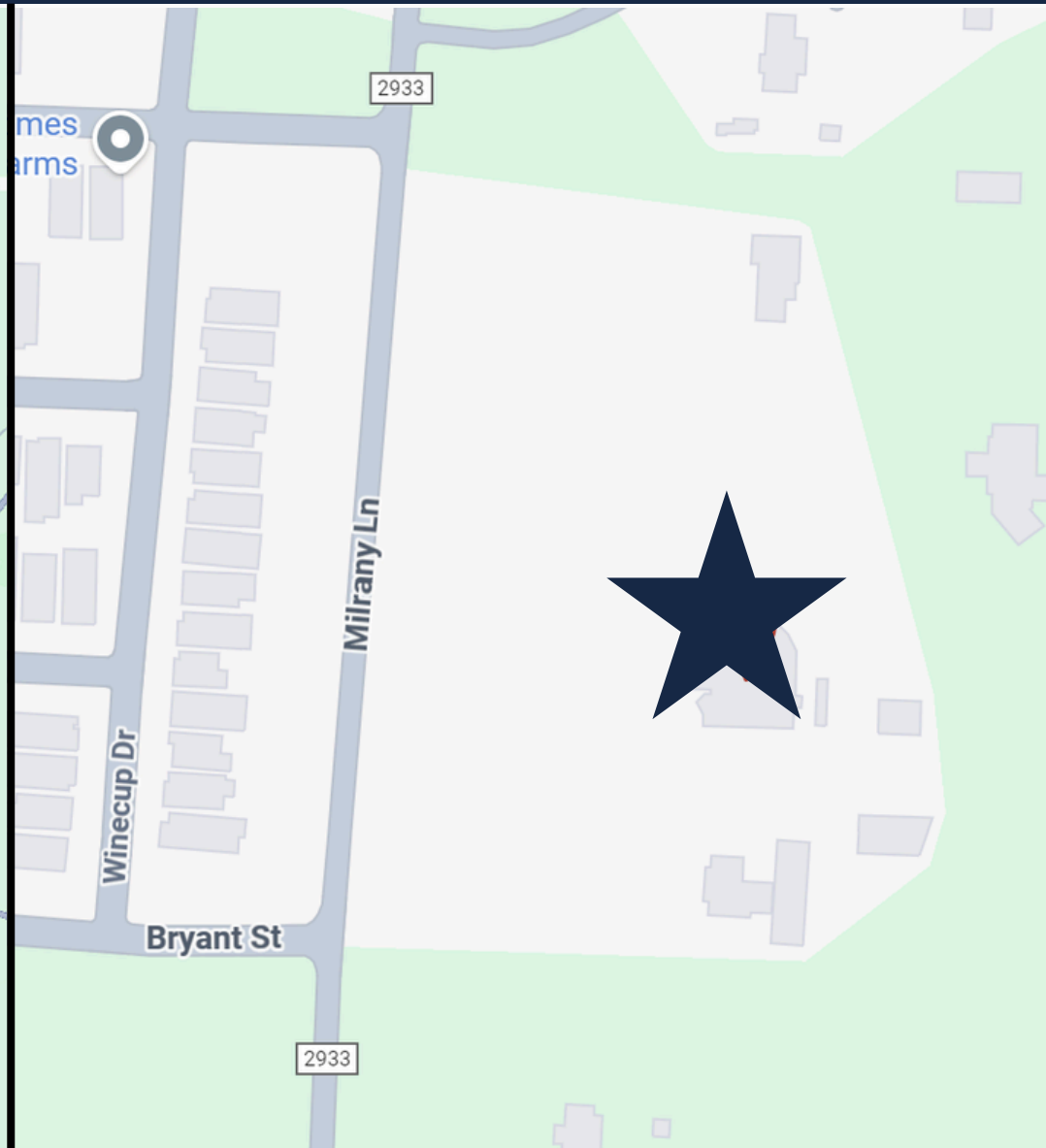
# Interior Customizations



Contact: 940-703-8897

[info@txbusinessparks.com](mailto:info@txbusinessparks.com) / [www.txbusinessparks.com](http://www.txbusinessparks.com)

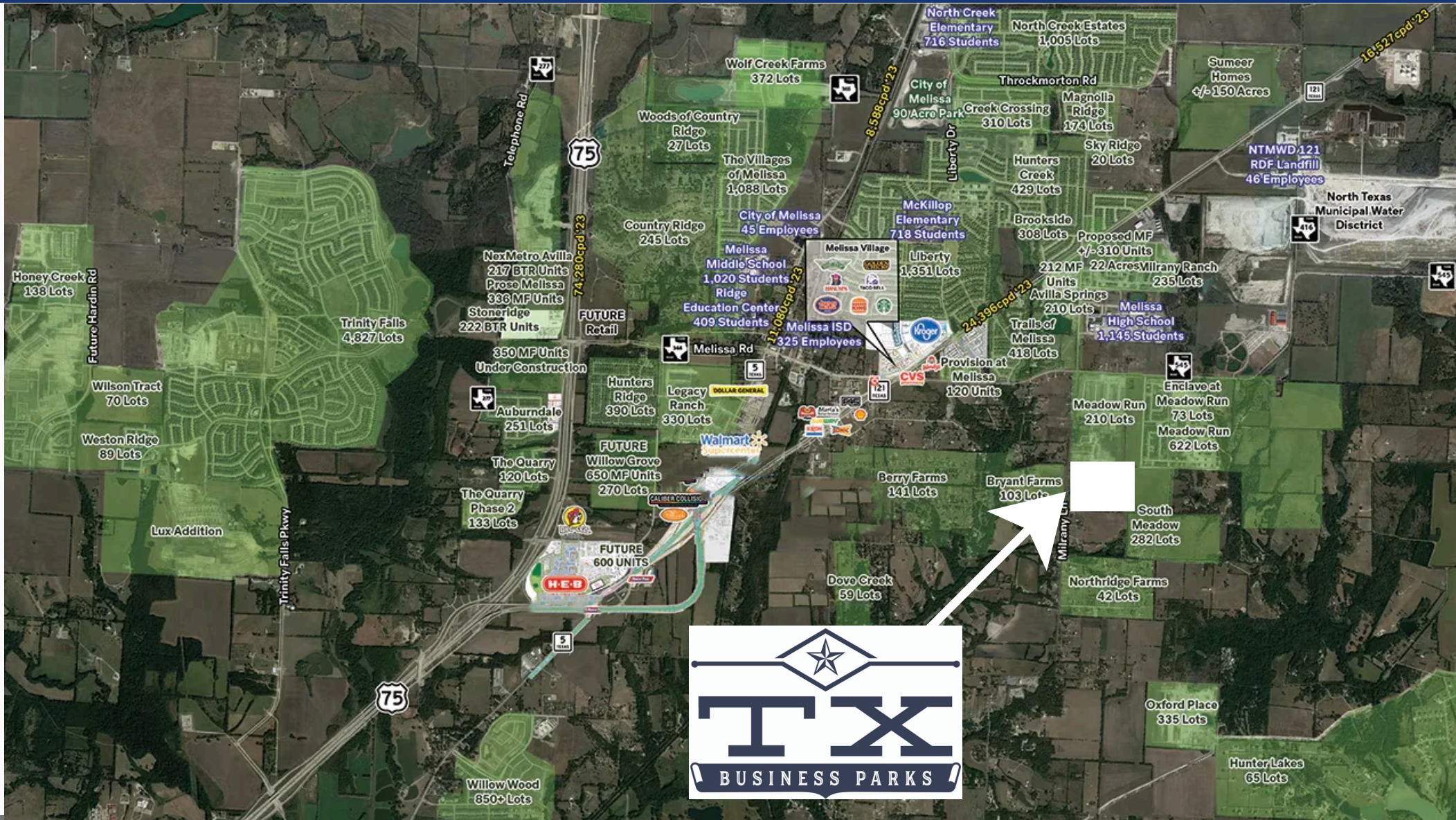
# Location - City of Melissa



Contact: 940-703-8897

[info@txbusinessparks.com](mailto:info@txbusinessparks.com) / [www.txbusinessparks.com](http://www.txbusinessparks.com)

# Location - Growth & Density



Contact: 940-703-8897

[info@txbusinessparks.com](mailto:info@txbusinessparks.com) / [www.txbusinessparks.com](http://www.txbusinessparks.com)

# TX Business Parks

The developers of Melissa Business Park have constructed over 500,000 SF of light industrial & office/warehouse property

## Projects include:

Harmon Road Business Park (13045 Harmon Road Fort Worth, TX 76177)

Harmon Industrial Condos (13015 Harmon Rd. Fort Worth, TX 76177)

Golden Heights Business Park (2163 Golden Heights Rd. Fort Worth, TX)

DFW Alliance Business Park (12801 Harmon Rd. Fort Worth, TX)

Argyle Business Park (308 East FM 1830 Argyle, TX 76226)

Contact: 940-703-8897

[info@txbusinessparks.com](mailto:info@txbusinessparks.com) / [www.txbusinessparks.com](http://www.txbusinessparks.com)

# Melissa Business Park

## Confidentiality

**The information in this sales brochure is proprietary and confidential, and is intended to be reviewed only by the party receiving it from TX Park Management, LLC. This brochure should not be made available to any other person or entity without the written consent of TX Park Management, LLC.**